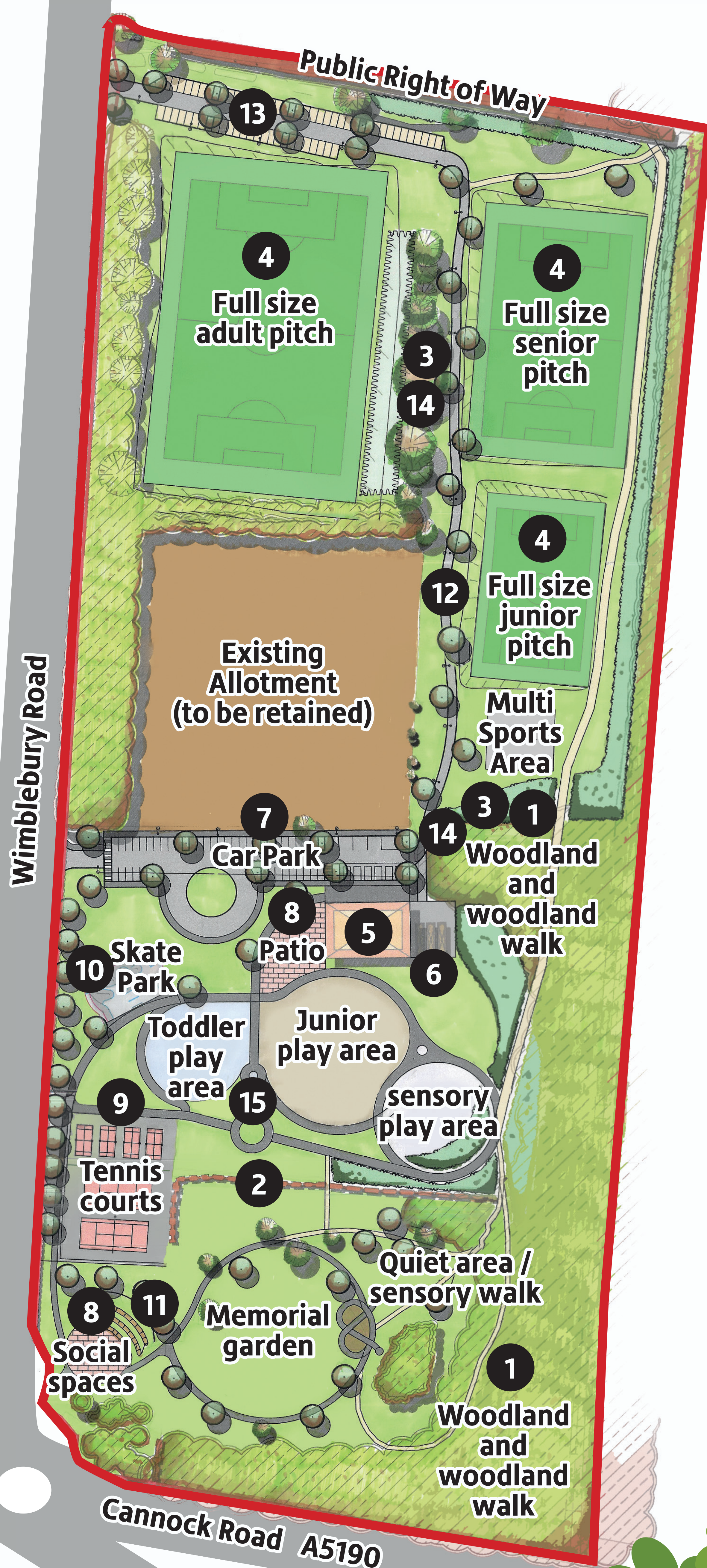


Budget
£200,000



Site Plan



KEY

- Site boundary
- 1** Existing mature broad leaf woodland - oak, Ash & Birch
- 2** Hawthorn, Blackthorn & Holly hedgerow.
- 3** Existing specimen trees with deer and rabbit guards
- 4** Re-furbished Football pitches - to include re-leveling, new drainage, seeding, rolling and lining
- 5** Proposed new changing facilities with public toilets, food and snack provision, & small community room
- 6** Storage containers
- 7** New visitor car park for 40 cars, 3 mini buses, 6 disability spaces & drop off point for coaches
- 8** Hard surfaced patio & outdoor social spaces
- 9** Additional junior tennis courts
- 10** New sports plaza for rollerskates, skate boards, BMX stunts & scooters
- 11** Outdoor amphitheatre to include new PA system & speakers
- 12** Formal tree lined avenue
- 13** Existing car park for football to be resurfaced to include tree planting formal parking spaces & new access road
- 14** Tree planting to be carried out by the Forest of Mercia
- 15** Learn to ride area. Hard paved road for children to learn bike skills, road safety and have fun.

Map not to scale