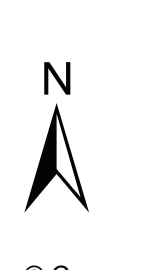


Heath Hayes East and Wimblebury Ward

1:2,900 @ A0
 0 100 200 300 Meters



© Crown copyright and database rights 2021 OS 43368U

Cannock Chase District Council Open Space Assessment Part 1

| TYPOLGY20 | Access: Unrestricted | Limited | Restricted |
|--|----------------------|---------|------------|
| Allotments and community gardens | | | |
| Amenity green space | | | |
| Churchyards, burial sites and cemeteries | | | |
| Civic Spaces and public squares | | | |
| Equipped open spaces for children and young people | | | |
| Landscape Link | | | |
| Outdoor sports provision | | | |
| Parks and Gardens | | | |
| Semi-natural spaces | | | |



Hednesford Green Heath Ward

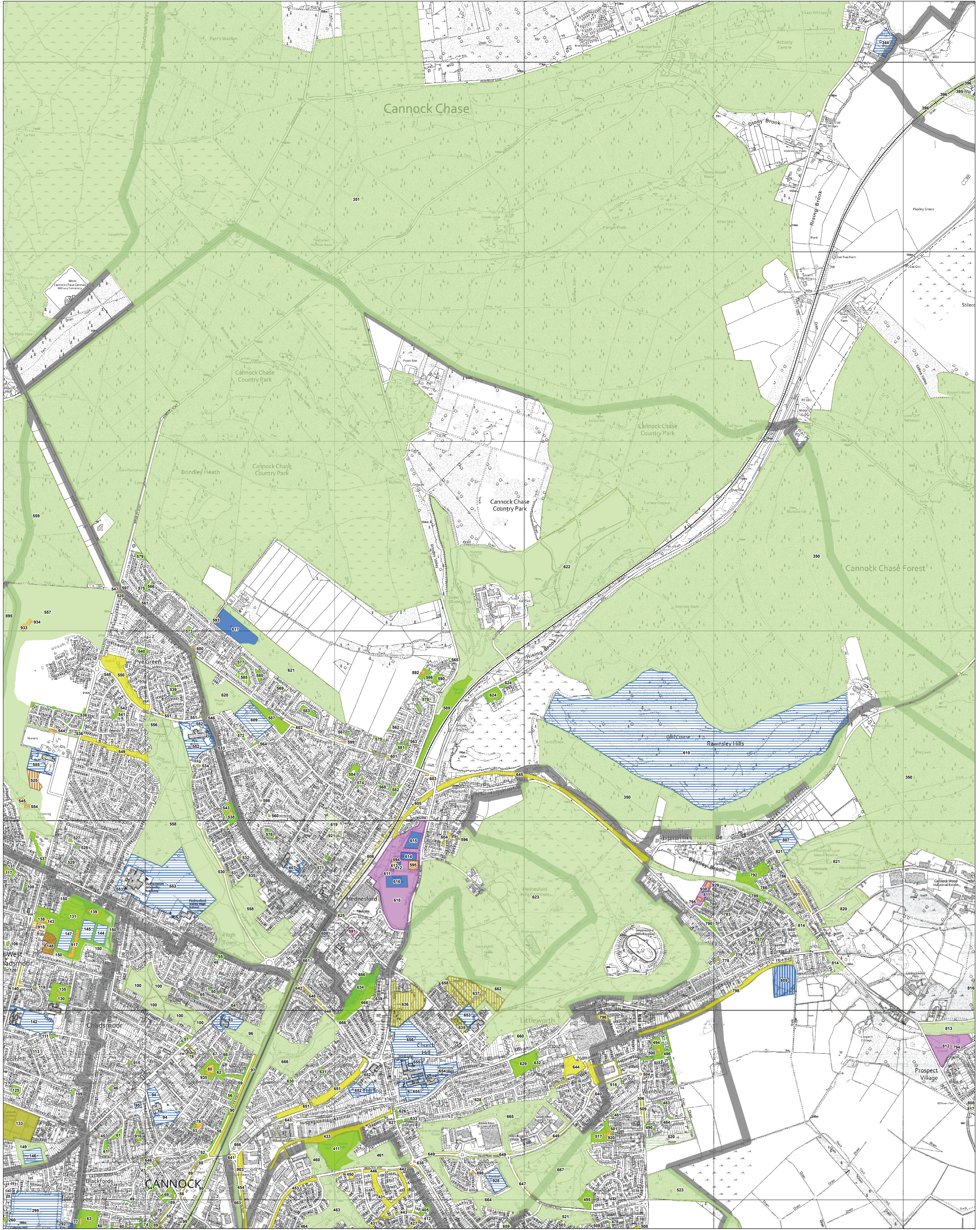
1:3,100 @ A0
 0 100 200 300 Meters



© Crown copyright and database rights 2021 OS 43368U

Cannock Chase District Council Open Space Assessment Part 1

| TYPOLGY20 | Access: Unrestricted | Limited | Restricted |
|--|----------------------|---------|------------|
| Allotments and community gardens | | | |
| Amenity green space | | | |
| Churchyards, burial sites and cemeteries | | | |
| Civic Spaces and public squares | | | |
| Equipped open spaces for children and young people | | | |
| Landscape Link | | | |
| Outdoor sports provision | | | |
| Parks and Gardens | | | |
| Semi-natural spaces | | | |



Hednesford North Ward

1:6,300 @ A0
 0 100 200 300 Meters

Cannock Chase District Council Open Space Assessment Part 1

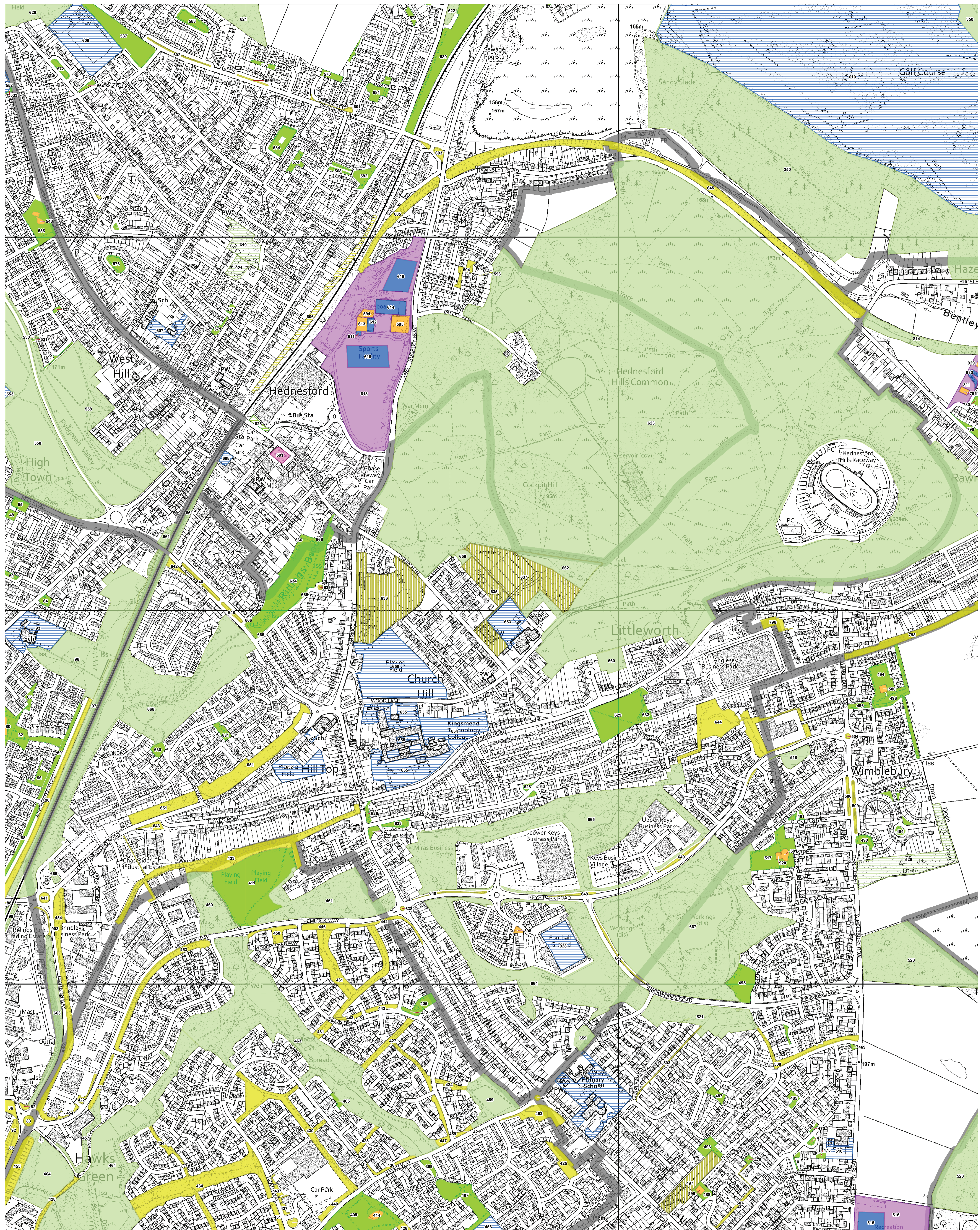
TYPOLOGY20

- Allotments and community gardens
- Amenity green space
- Churchyards, burial sites and cemeteries
- Civic Spaces and public squares
- Equipped open spaces for children and young people
- Landscape Link
- Outdoor sports provision
- Parks and Gardens
- Semi-natural spaces

Access: Unrestricted Limited Restricted

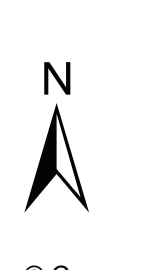
| Unrestricted | Limited | Restricted |
|--------------|---------|------------|
| | | |
| | | |
| | | |
| | | |
| | | |
| | | |
| | | |
| | | |

© Crown copyright and database rights 2021 OS 43368U



Hednesford South Ward

1:3,200 @ A0
 0 100 200 300 Meters



© Crown copyright and database rights 2021 OS 43368U

Cannock Chase District Council Open Space Assessment Part 1

TYPOLGY20

- Allotments and community gardens
- Amenity green space
- Churchyards, burial sites and cemeteries
- Civic Spaces and public squares
- Equipped open spaces for children and young people
- Landscape Link
- Outdoor sports provision
- Parks and Gardens
- Semi-natural spaces

| Access: Unrestricted | Limited | Restricted |
|----------------------|---------|------------|
| | | |
| | | |
| | | |
| | | |
| | | |
| | | |
| | | |
| | | |
| | | |