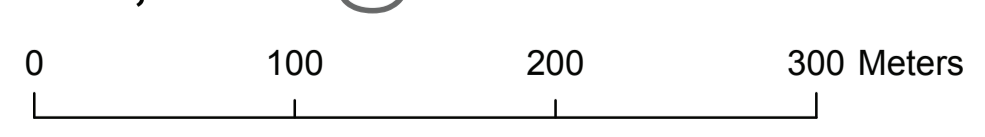


Cannock West Ward

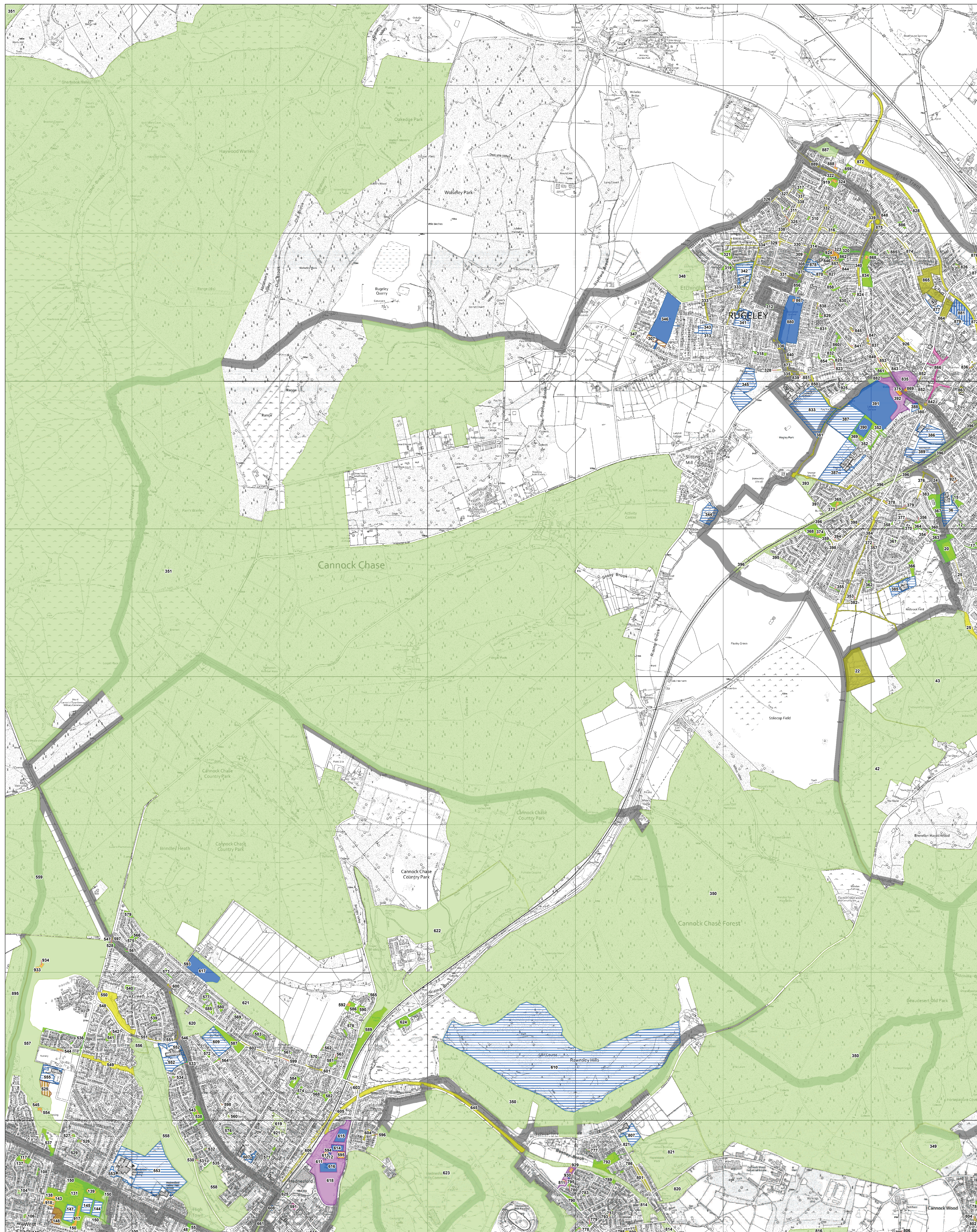
1:2,900 @ A0



© Crown copyright and database rights 2021 OS 43368U

Cannock Chase District Council Open Space Assessment Part 1

TYPOLGY20	Access: Unrestricted	Limited	Restricted
Allotments and community gardens			
Amenity green space			
Churchyards, burial sites and cemeteries			
Civic Spaces and public squares			
Equipped open spaces for children and young people			
Landscape Link			
Outdoor sports provision			
Parks and Gardens			
Semi-natural spaces			



Etching Hill and The Heath Ward

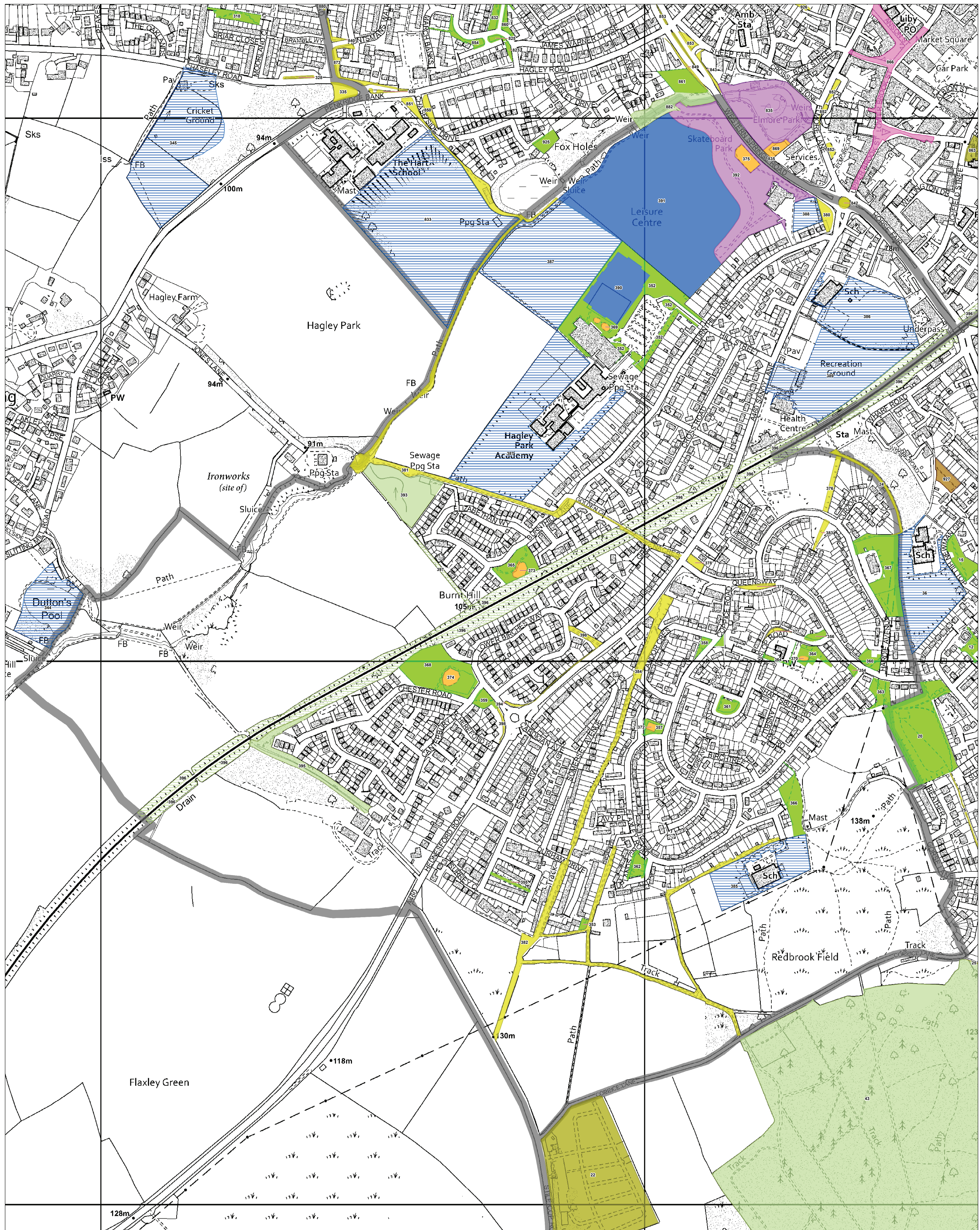
1:8,100 @ A0
 0 100 200 300 Meters



© Crown copyright and database rights 2021 OS 43388U

Cannock Chase District Council Open Space Assessment Part 1

TYPOLOGY20	Access: Unrestricted	Limited	Restricted
Allotments and community gardens			
Amenity green space			
Churchyards, burial sites and cemeteries			
Civic Spaces and public squares			
Equipped open spaces for children and young people			
Landscape Link			
Outdoor sports provision			
Parks and Gardens			
Semi-natural spaces			

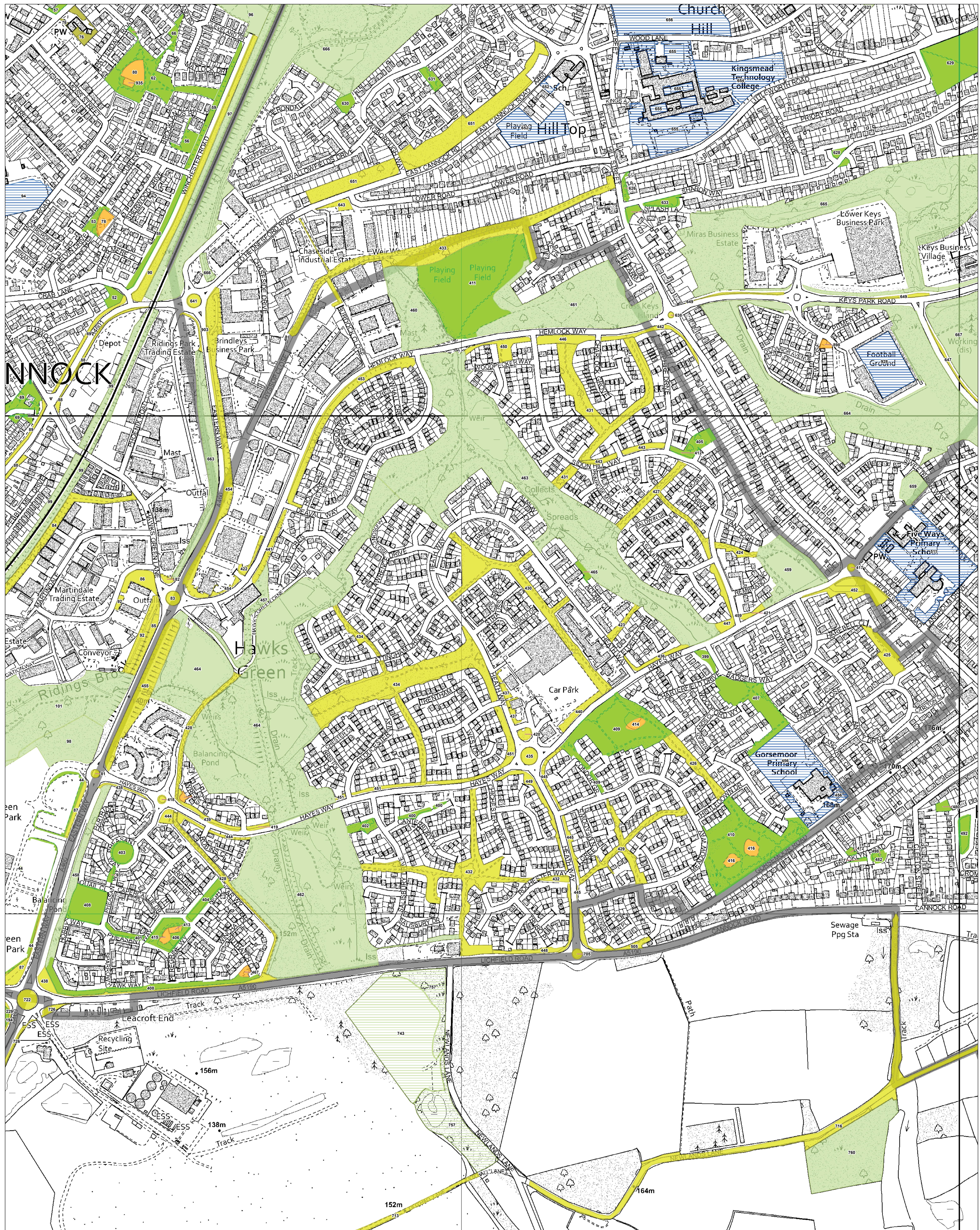


Hagley Ward

1:2,200 @ A0
 0 100 200 300 Meters

Cannock Chase District Council Open Space Assessment Part 1

TYPOLOGY20	Access: Unrestricted	Limited	Restricted
Allotments and community gardens			
Amenity green space			
Churchyards, burial sites and cemeteries			
Civic Spaces and public squares			
Equipped open spaces for children and young people			
Landscape Link			
Outdoor sports provision			
Parks and Gardens			
Semi-natural spaces			



Hawks Green Ward

1:2,400 @ A0
 0 100 200 300 Meters



© Crown copyright and database rights 2021 OS 43368U

Cannock Chase District Council Open Space Assessment Part 1

TYPOLOGY20	Access: Unrestricted	Limited	Restricted
Allotments and community gardens			
Amenity green space			
Churchyards, burial sites and cemeteries			
Civic Spaces and public squares			
Equipped open spaces for children and young people			
Landscape Link			
Outdoor sports provision			
Parks and Gardens			
Semi-natural spaces			