

5. Bibliography

Secondary sources:

- Aston, M. & Bond, J. 1976. *The landscape of towns*. J. M. Dent & Sons, London.
- Birrell, J. 1979. 'Medieval agriculture' in M. W. Greenslade & D. A. Johnson (eds.) *A History of the county of Stafford Volume IV*. Oxford University Press, London.
- Birrell, J. 1991. 'The forest and the chase in medieval Staffordshire' in A. McInnes (ed.) *Staffordshire Studies volume III 1990-91*. University of Keele.
- Brown, D. 1999. Comments on 'Rugeley town centre draft conservation area appraisal' by Cannock Chase Council 1999. Unpublished document.
- Cannock Chase District Council. 2000. Rugeley town centre conservation area appraisal. Unpublished document.
- Cannock Chase District Council. 2005. Talbot Street/Lichfield Street, Rugeley: Conservation Area Appraisal. Unpublished document.
- Cannock Chase District Council. 2006. Church Street, Rugeley: Conservation Area Appraisal. Unpublished document.
- Clark, P. L. 1967. 'Railways' in M. W. Greenslade & J. G. Jenkins (eds.) *A history of the county of Stafford volume II*. Oxford University Press (London).
- Communities and Local Government. 2012. National Planning Policy Framework (www.communities.gov.uk)
- Currie, C. R. J. 1979a. 'Agriculture 1793 to 1875' in M. W. Greenslade & D. A. Johnson (eds.) *A History of the county of Stafford Volume IV*. Oxford University Press, London.
- Currie, C. R. J. 1979b. 'Rugeley Grammar School' in M. W. Greenslade & D. A. Johnson (eds.) *A History of the county of Stafford Volume IV*. Oxford University Press, London.
- Dyer, C. 2002. 'The urbanizing of Staffordshire: the first phases' in *Staffordshire Studies volume 14*. University of Keele
- English Heritage. 2008. *Conservation principles, policies and guidance for the sustainable management of the historic environment*. English Heritage.
- English Heritage, Communities and Local Government and DCMS. 2010. *PPS 5 Planning for the historic environment: historic environment planning practice guide*. Unpublished document.
- Ferris, I. 2005. An archaeological desktop assessment of the site of the former Hagley Mill off Sheepfair, Rugeley, Staffordshire. Unpublished document.
- Greenslade, M. W. 1959. 'Rugeley' in L. M. Midgley (ed.) *A History of the county of Stafford Volume 5*. Oxford University Press, London.
- Greenslade, M. W. 1967. 'Forests: Cannock' in M. W. Greenslade & J. G. Jenkins (eds.) *A history of the county of Stafford volume II*. Oxford University Press, London.
- Hawkins, A & Rumble, A. 1976. *Domesday Book: Staffordshire*. Phillimore, Chichester.
- Heath, P. 1974. 'The Medieval Church' in M. W. Greenslade (ed.) *A History of the county of Stafford Volume III*. Oxford University Press, London.
- Hooke, D. 2006. *England's landscape volume 6: the West Midlands*. Collins, London.
- Horowitz, D. 2005. *The placenames of Staffordshire*. Privately published.

Hunt, J. nd. An evaluation of the Newcastle-under-Lyme Pilot Study, and recommendations arising for a Staffordshire EUS Project. Unpublished document.

Jenkins, J. G. 1967. 'Other industries: glass' in M. W. Greenslade & J. G. Jenkins (eds.) A history of the county of Stafford volume II. Oxford University Press, London.

Johnson, B. L. C. 1967, 'Iron to 1750' in M. W. Greenslade & J. G. Jenkins (eds.) A history of the county of Stafford volume II. Oxford University Press, London.

Marches Archaeology. 2000. 16-18 Lower Brook Street, Rugeley, Staffordshire: A report on an archaeological evaluation. Unpublished document.

Minchinton, W. E. 1967, 'Tinplate and allied products' in M. W. Greenslade & J. G. Jenkins (eds.) A history of the county of Stafford volume II. Oxford University Press, London.

Rackham, O. 1986. The history of the countryside: the full fascinating story of Britain's landscape. J. M. Dent & Sons Ltd., London.

RCHME. 1996. Hillfort survey reports. Unpublished document.

Slater, T. R. 2007. 'Plan characteristics of small boroughs and market settlements: evidence from the midlands' in K. Giles & C. Dyer (eds.) Town and country in the middle ages: contrasts, contacts and interconnections 1100-1500. Maney, Leeds.

Stafford Record Society. 1999. 'Forest Pleas of 1286' in J. Birrell (ed.) Staffordshire Historical Collection 4th series, volume 18. Stafford Record Society, Stafford.

Staffordshire County Council. Nd. Conjectural plan of Rugeley circa 1570 (SST241). Unpublished plan.

Staffordshire County Council. 1988. Trent and Mersey Canal Conservation Area no. 083. Unpublished document.

Staffordshire County Council. 2004. Integrated environment character assessment project: mapping of terrain types. Unpublished document.

Staffordshire County Council. 2009. Staffordshire Extensive Urban Survey: Cannock Historic Character Assessment. Unpublished document.

Studd, R. 2000. 'Recorded 'waste' in the Staffordshire Domesday' in J. R. Studd (ed.) Staffordshire Studies Volume 12. University of Keele.

Welch, C. 1998. 'Glass-making in Wolseley, Staffordshire' in Post Medieval Archaeology volume 31 1997. The Society for Post Medieval Archaeology, London.

William Salt Archaeological Society. 1924. 'Lichfield Magnum Registrum Album' in Staffordshire Historical Collection vol. 24. William Salt Archaeological Society, Kendal.

Primary sources: (all held by Staffordshire Record Office)

D(W) 1734/2/3/38: Rough survey book of Rugeley 1570.

D6/5D/81 Manor, Rugeley Hall and named properties 1712 – 1768

D615/D/84 Messuage converted into three and the Talbot Inn with a pew in Rugeley Church, rights on Cannock Chase 1758 – 1827

Online resources:

Access2Archives website. 'Papers of Addison, Jesson and Copper, Solicitors of Walsall relating to Cheshire, Manners & Co., tin plate manufacturers, Rugeley Plating Mill' 1713-1890 (SRO ref: D1317/2/5/1/1-61).

<http://www.nationalarchives.gov.uk/a2a/recor ds.aspx?cat=169-d1317&cid=1-2-5-1-1&kw=Rugeley%20Hagley#1-2-5-1-1> Date accessed: 21st January 2010.

English Heritage. 2005. Regeneration and the historic environment: heritage as a catalyst for better social and economic regeneration. URL: http://www.helm.org.uk/upload/pdf/Regenera tion_and_the_Historic_Environment_2005.pdf?1266576330 Date accessed: 19th February 2010.

Kelly's. 1896. 'Kelly's directory of Staffordshire'. URL: <http://www.historicaldirectories.org.uk> Date accessed: 8th February 2010.

PPS1: Delivering sustainable development. 2005. <http://www.communities.gov.uk/documents/p lanningandbuilding/pdf/planningpolicystatem ent1.pdf> Date accessed: 18th February 2010.

'Staffordshire Fines: 21-30 Edward III', Staffordshire Historical Collections, vol. 11 (1890), pp. 160-169. URL: <http://www.british-history.ac.uk/report.aspx?compid=52494&strq uery=Ruggeleye> Date accessed: 06 January 2010.

'Staffordshire Fines: 1-10 Edward III', Staffordshire Historical Collections, vol. 11 (1890), pp. 127-141. URL: <http://www.british-history.ac.uk/report.aspx?compid=52492&strq uery=Ruggeleye> Date accessed: 06 January 2010.

Staffordshire Lay Subsidy, 1327: Cuttlestone hundred', Staffordshire Historical Collections, vol. 7, part 1 (1886), pp. 236-246. URL: <http://www.british-history.ac.uk/report.aspx?compid=52473> Date accessed: 06 January 2010.

Staffordshire Lay Subsidy 1332-3: Cuttlestone hundred', Staffordshire Historical Collections, vol. 10, part 1 (1889), pp. 118-126. URL: <http://www.british-history.ac.uk/report.aspx?compid=52352> Date accessed: 06 January 2010.

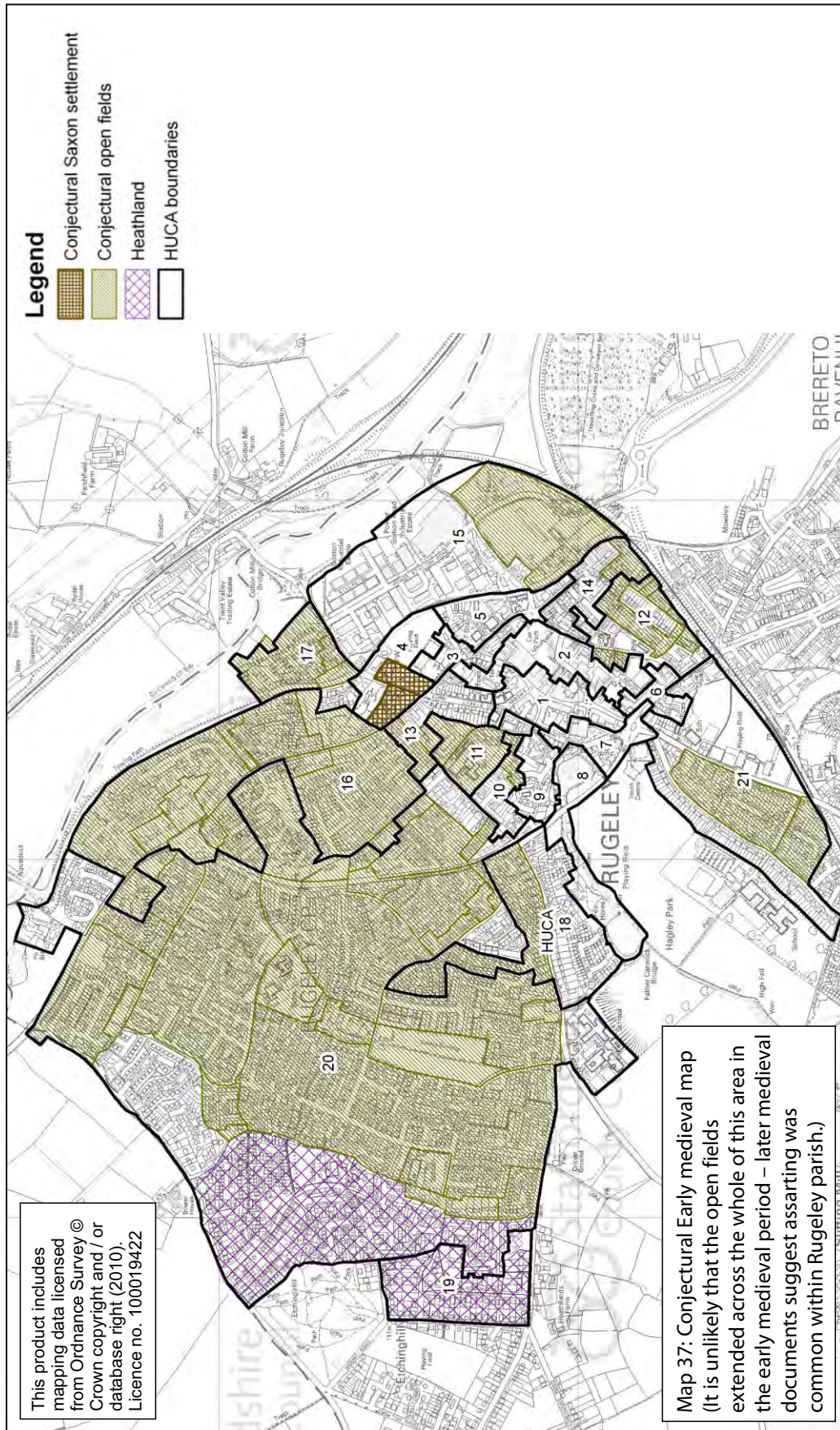
Staffordshire County Council. 2007. 'Rugeley bypass'. URL: <http://www.staffordshire.gov.uk/rugeleybypas s/>. Date accessed: 08 February 2010.

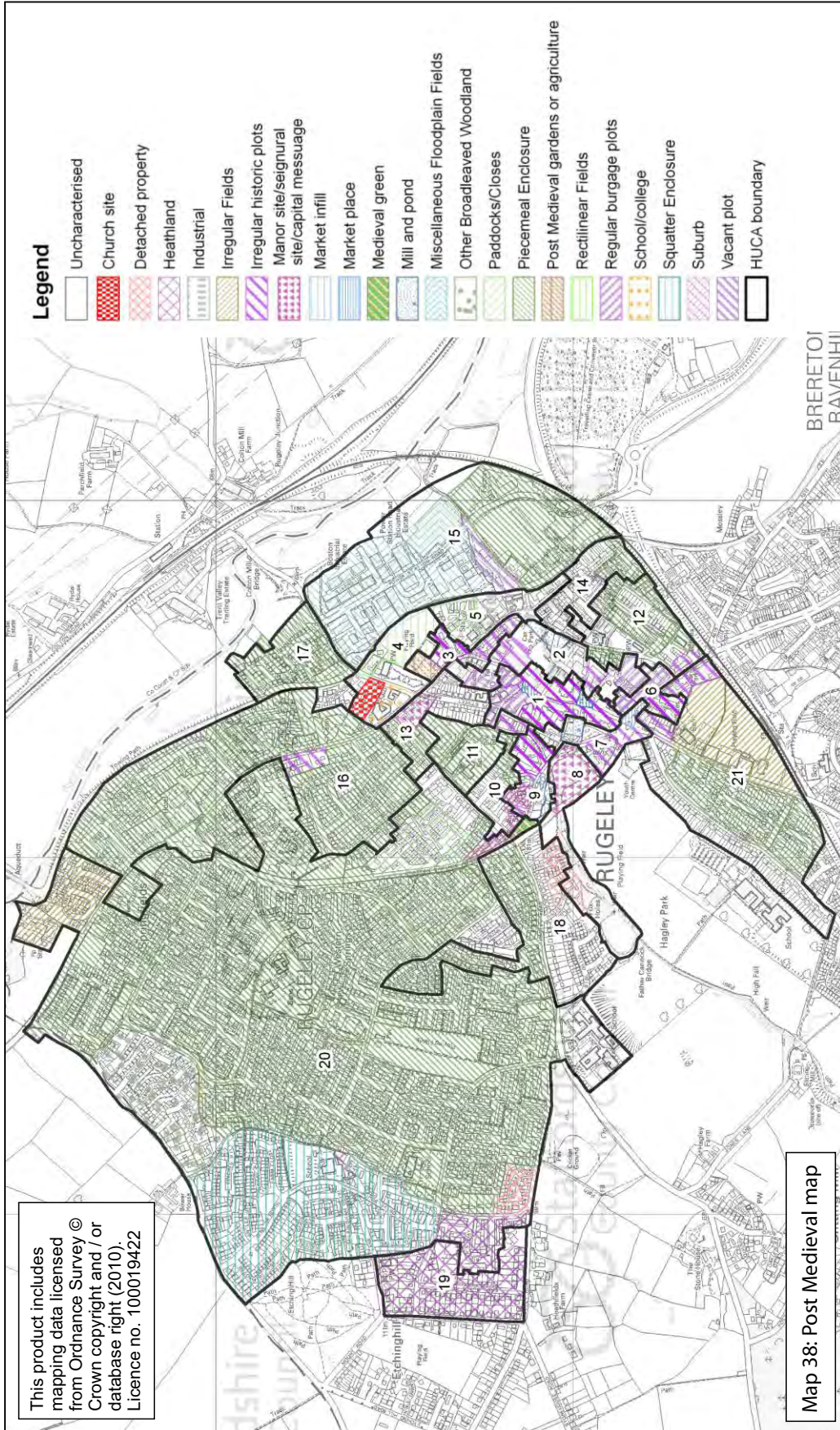
Wiki Rugeley Power Station. http://wapedia.mobi/en/Rugeley_Power_Stati on#1. Date accessed: 10 February 2010.

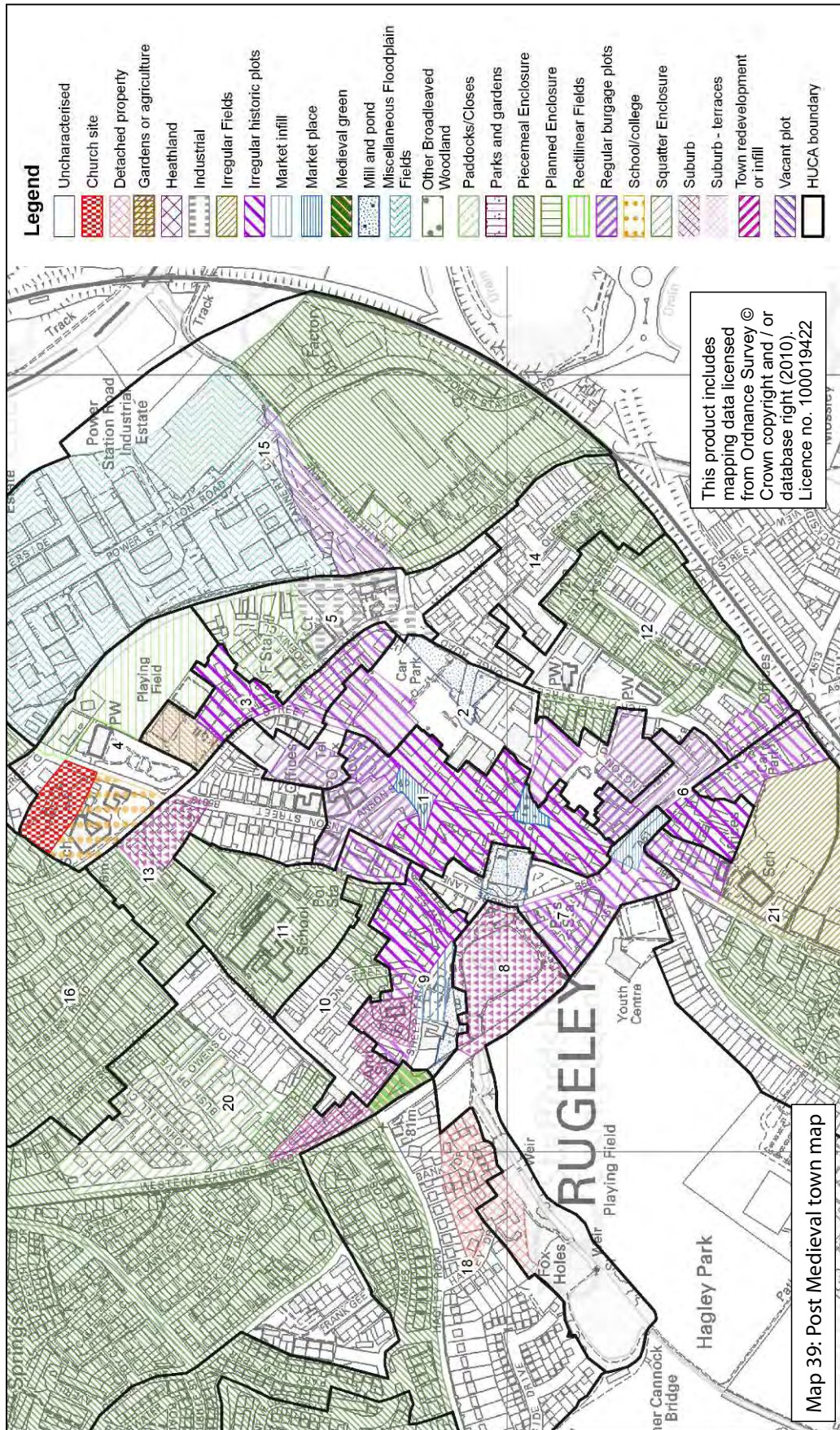
White, W. 1851. 'History, gazetteer and directory of Staffordshire'. URL: <http://www.historicaldirectories.org.uk> Date accessed: 08 February 2010.

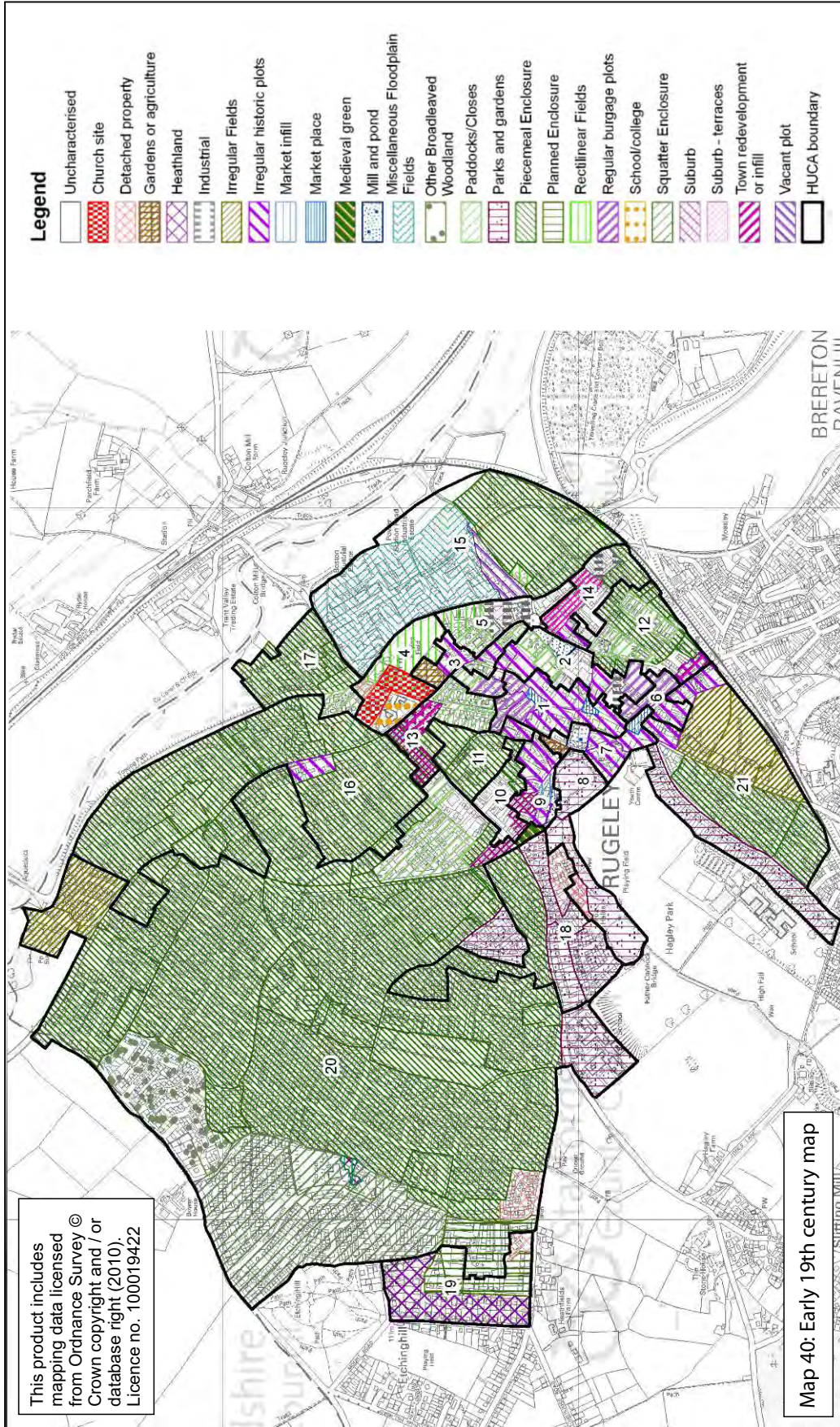
Databases:

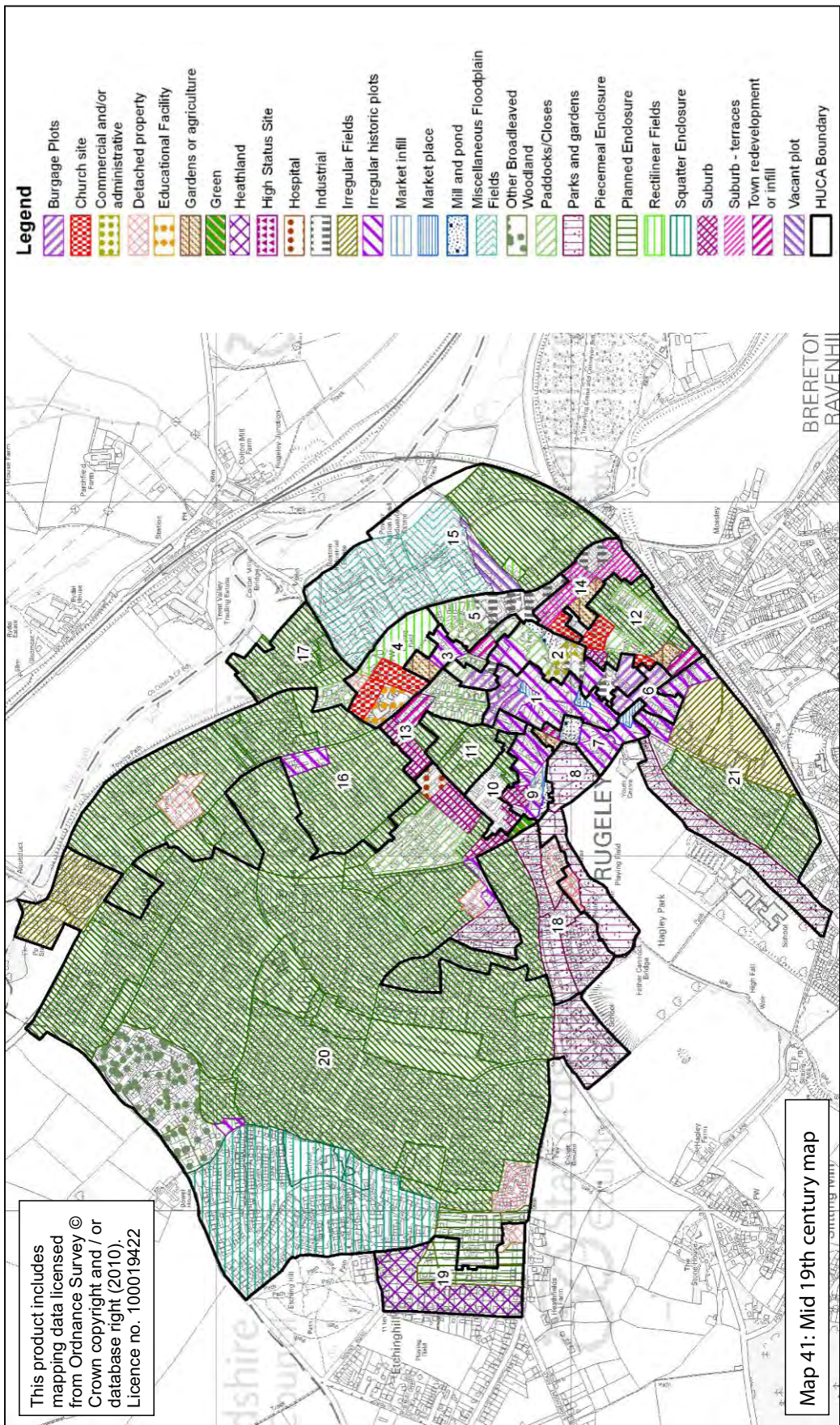
Staffordshire HER held by Staffordshire County Council

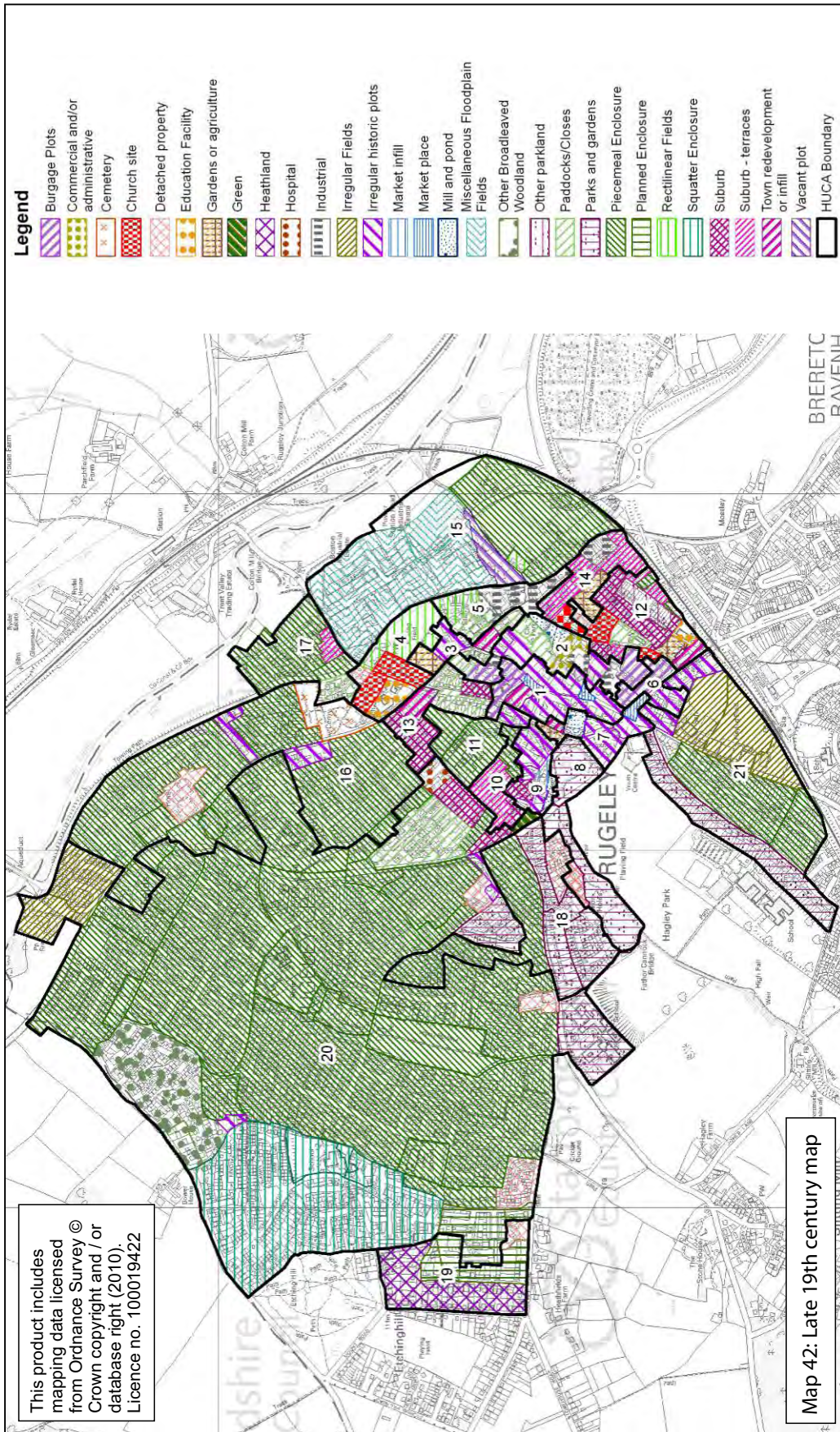


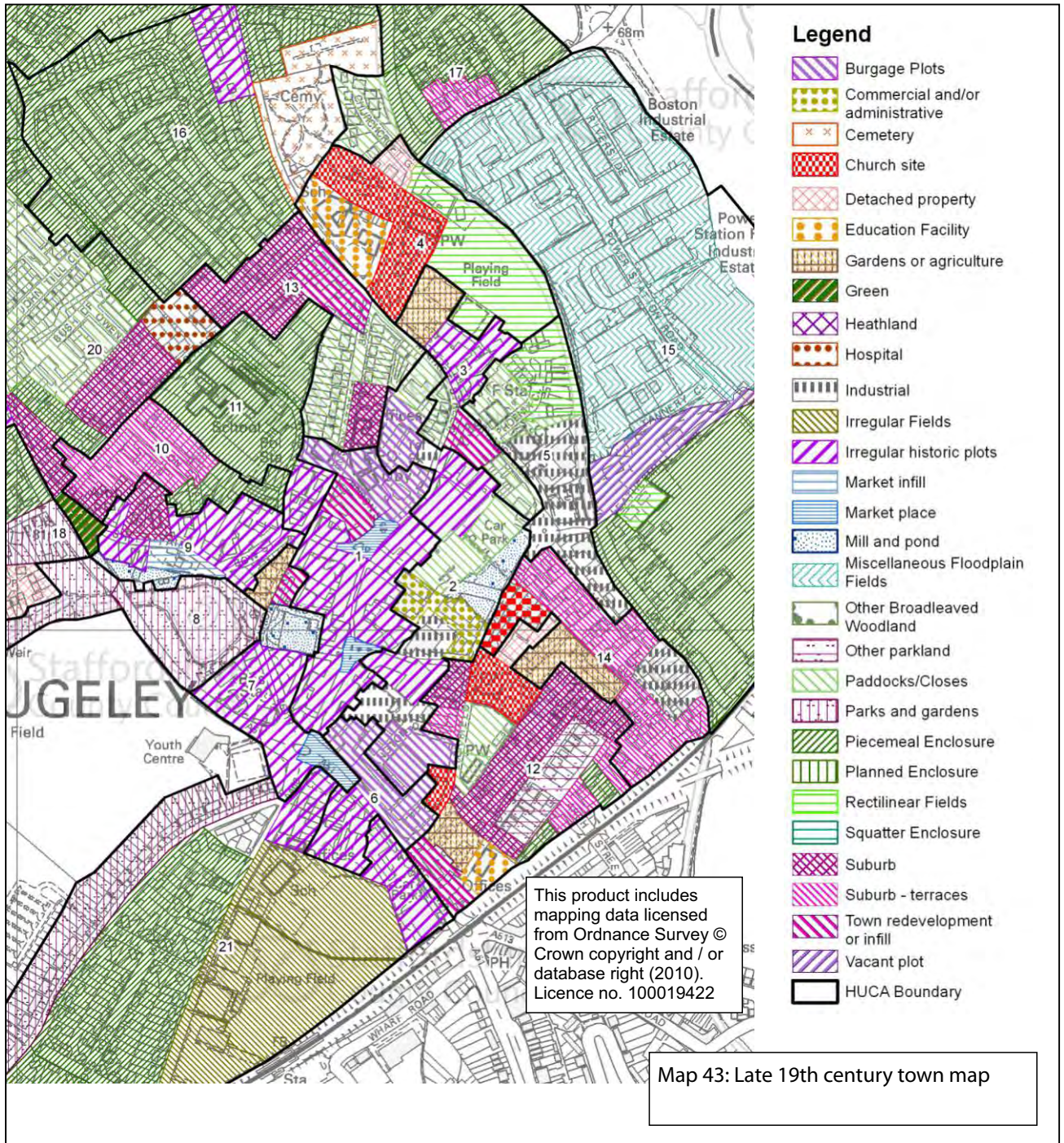


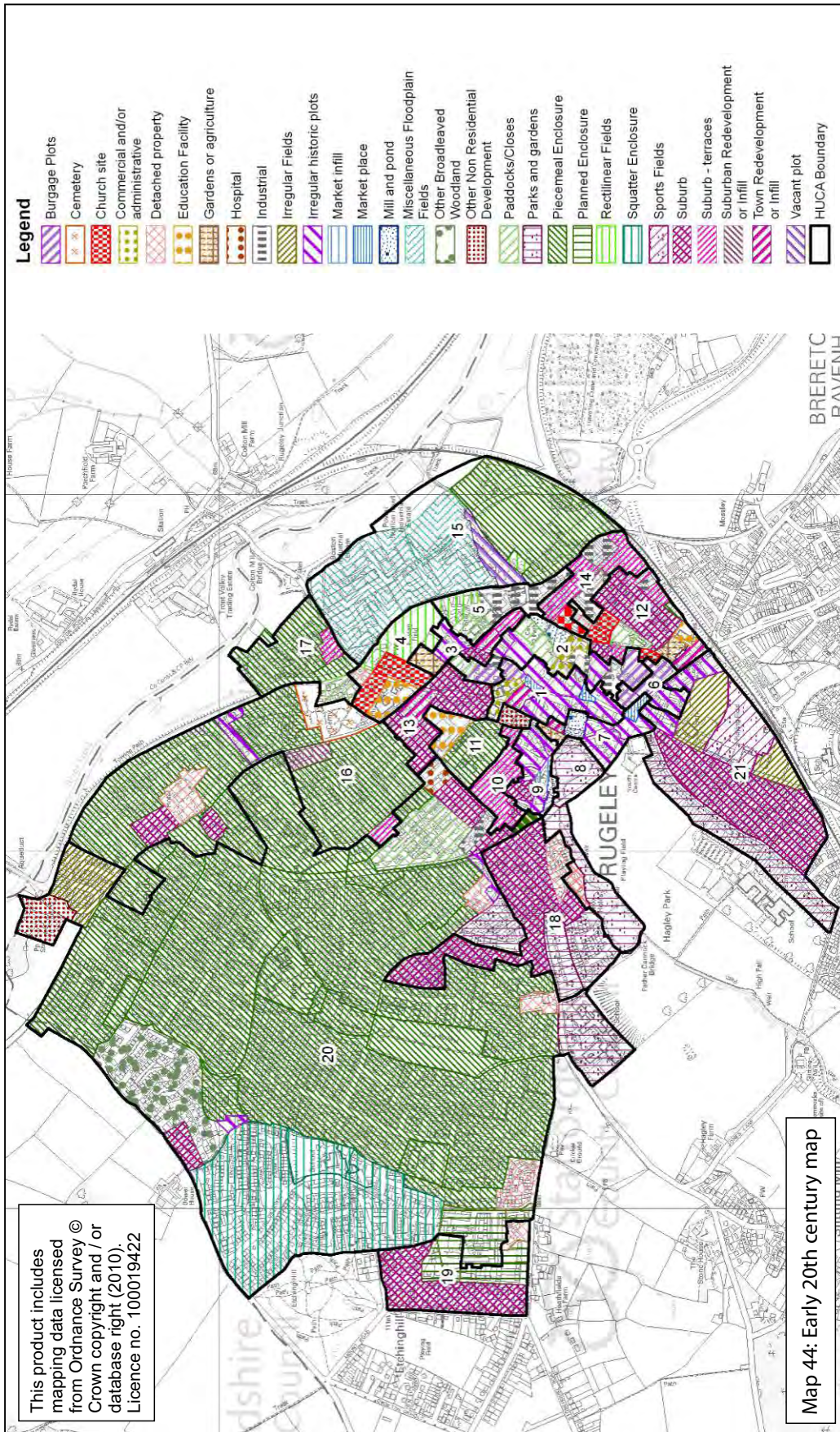


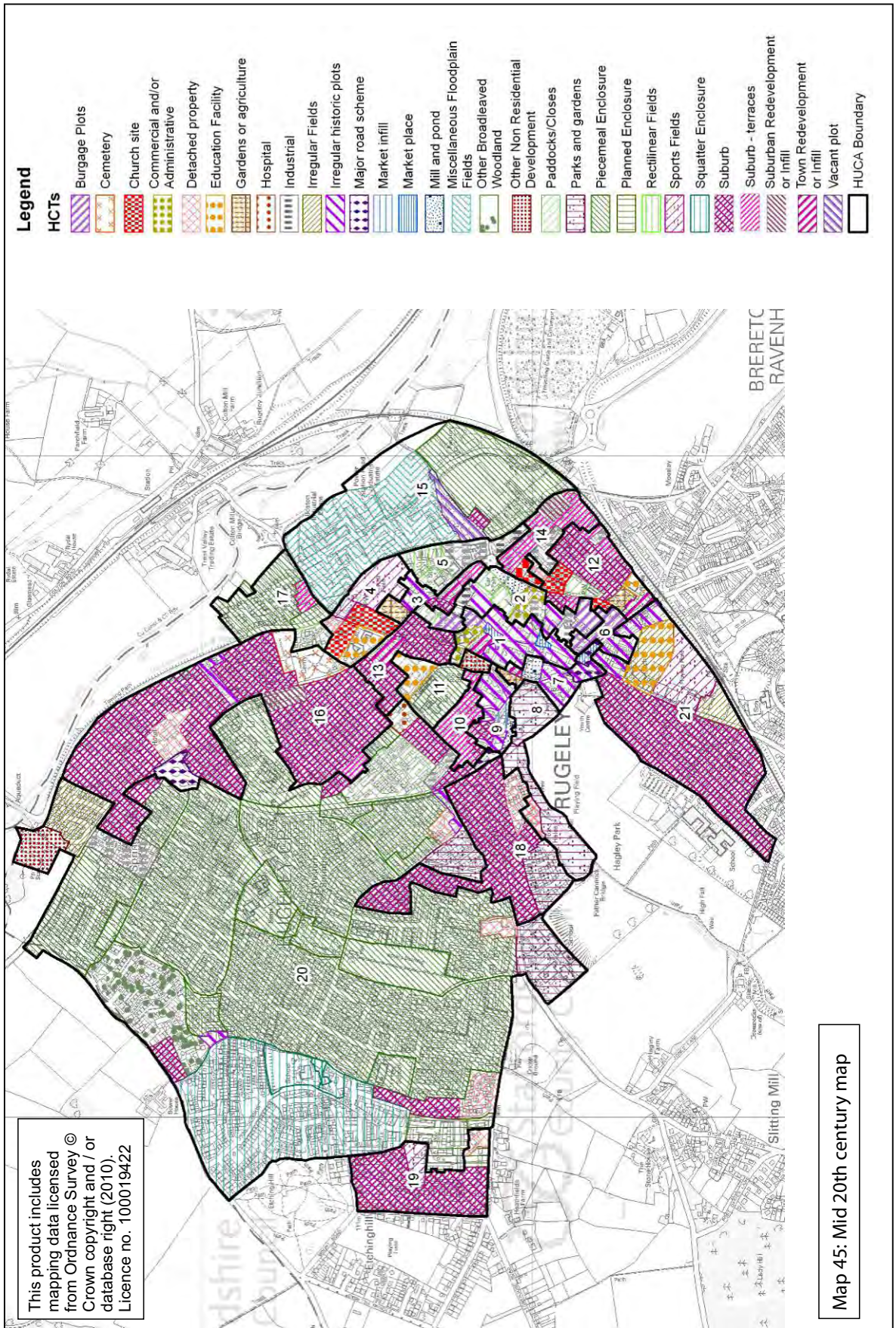


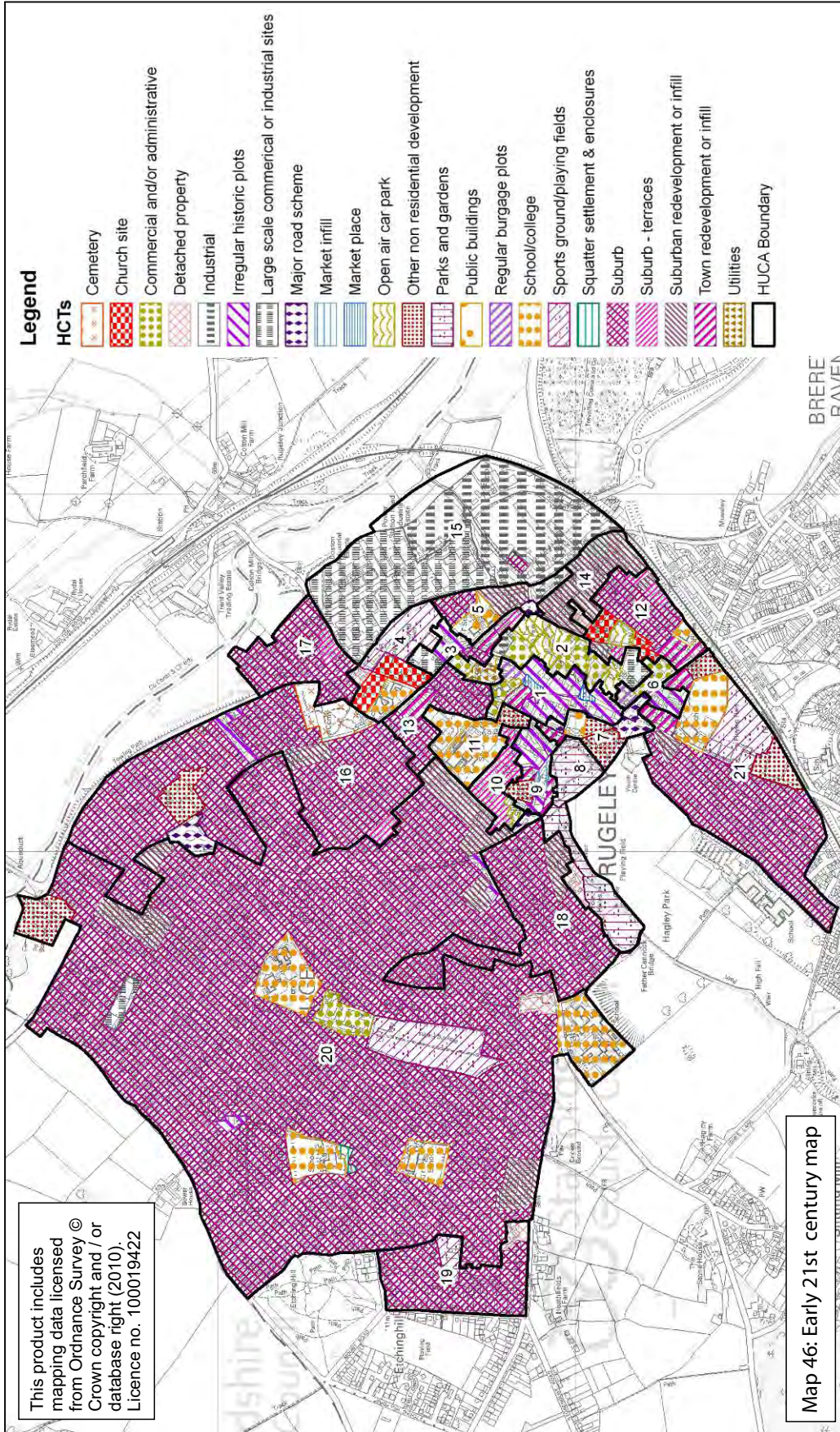


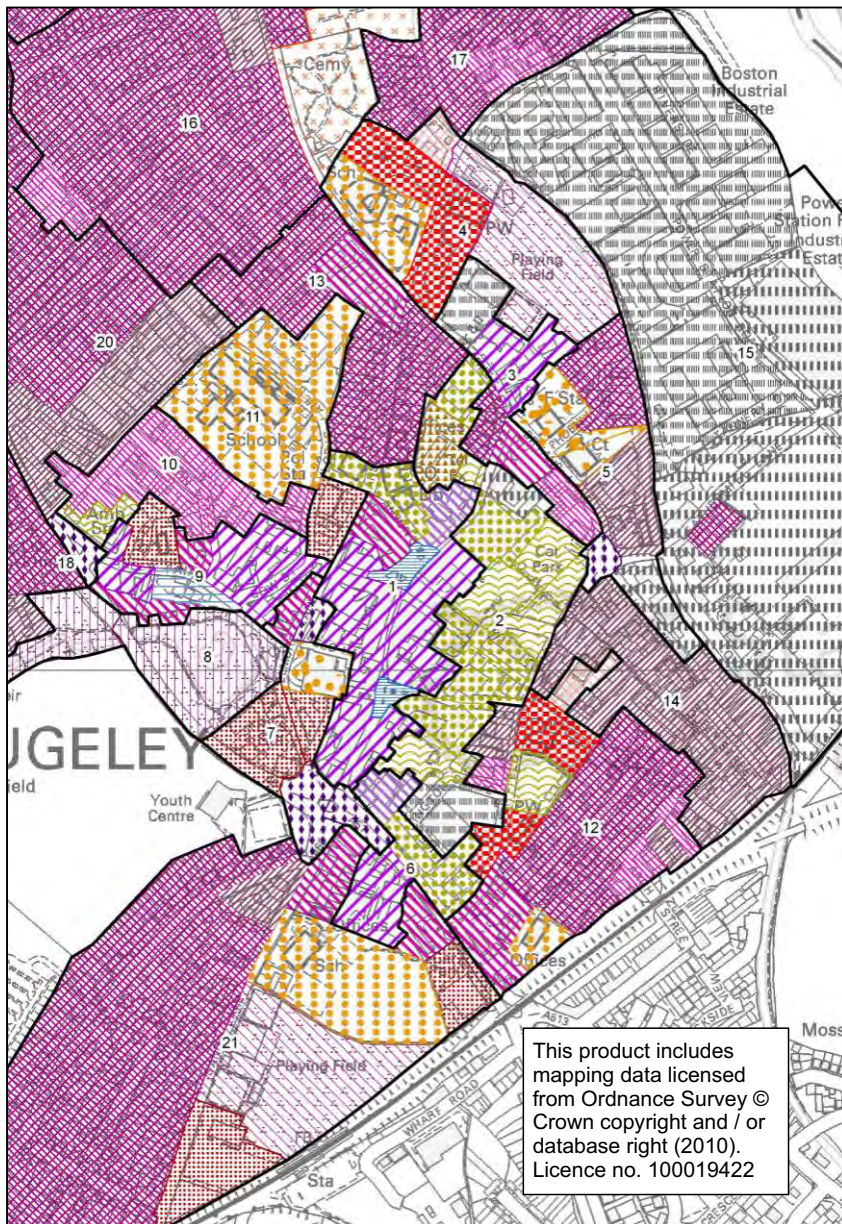












Legend

HCTs

-  Cemetery
-  Church site
-  Commercial and/or administrative
-  Detached property
-  Industrial
-  Irregular historic plots
-  Large scale commercial or industrial sites
-  Major road scheme
-  Market infill
-  Market place
-  Open air car park
-  Other non residential development
-  Parks and gardens
-  Public buildings
-  Regular burgage plots
-  School/college
-  Sports ground/playing fields
-  Squatter settlement & enclosures
-  Suburb
-  Suburb - terraces
-  Suburban redevelopment or infill
-  Town redevelopment or infill
-  Utilities
-  HUCA Boundary

This product includes mapping data licensed from Ordnance Survey © Crown copyright and / or database right (2010). Licence no. 100019422

Map 47:
Early 20th century town map

Staffordshire Extensive
Urban Survey

Rugeley

Historic Character Assessment



Copyright © Staffordshire County Council

Historic Environment Team
Staffordshire County Council

Office Location: No. 1 Staffordshire Place,
Stafford, ST16 2LP

Postal Address: Wedgwood Building, Block A,
Tipping Street, Stafford, ST16 2DH

Tel: 01785 277285
Email: her@staffordshire.gov.uk

Mapping in this volume is based upon the Ordnance Survey mapping with the permission of the Controller of Her Majesty's Stationary Office © Crown copyright and/or database right 2009 all rights reserved. Unauthorised reproduction infringes Crown copyright and may lead to prosecution or civil proceedings. Staffordshire County Council Licence No. 100019422
February 2009